

0-19 Prevention & Early Intervention Service

**Children and Families Overview and
Scrutiny Panel
14 February 2020**



Needs assessment 2018

- Need appears to be increasing
- Some poor outcomes remain & inequalities persist (e.g. early years, school readiness)
- Specialist service demand still increasing
- Prevention & early intervention can improve outcomes and reduce costs
- Services/offer lacks integration/join up
- Some gaps and duplications remain
- Evidence base not consistently adhered to

Recommendations

- Strong investment needed in prevention and early intervention
- Shift to an upstream proactive integrated systems approach
- All CYP to receive evidence based universal service with more support for some, targeted on those who need it most
- All services shaped around the needs of the child and family, and underpinned by strong evidence of what works
- Narrowing inequalities in outcome between different groups of children should be a focus of all work
- Underpinned by community capacity building

Service integration

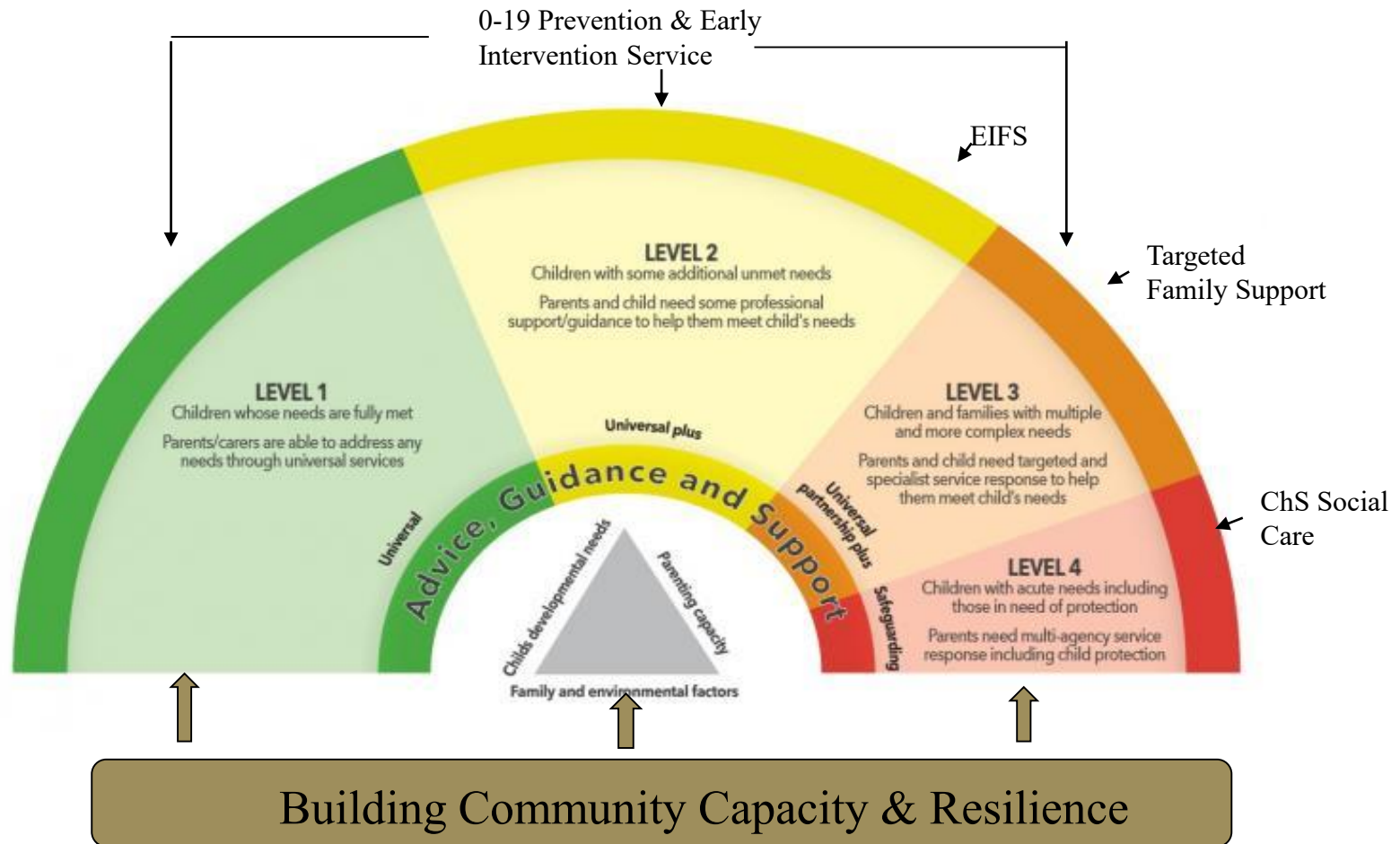
We will commission an evidence based single integrated service to bring together:

- CYP Public Health services
 - Health Visiting (pre-school child development checks & targeted support)
 - Intensive Home Visiting (intensive programme for first time young mothers)
 - Breastfeeding Support
 - School Health/Nursing (school-age health and development reviews & targeted support)
- Parenting & Community Development Service
 - Development of community led activities and groups
 - Peer support, volunteering & mentoring
 - Parenting programmes
 - Family Information and advice

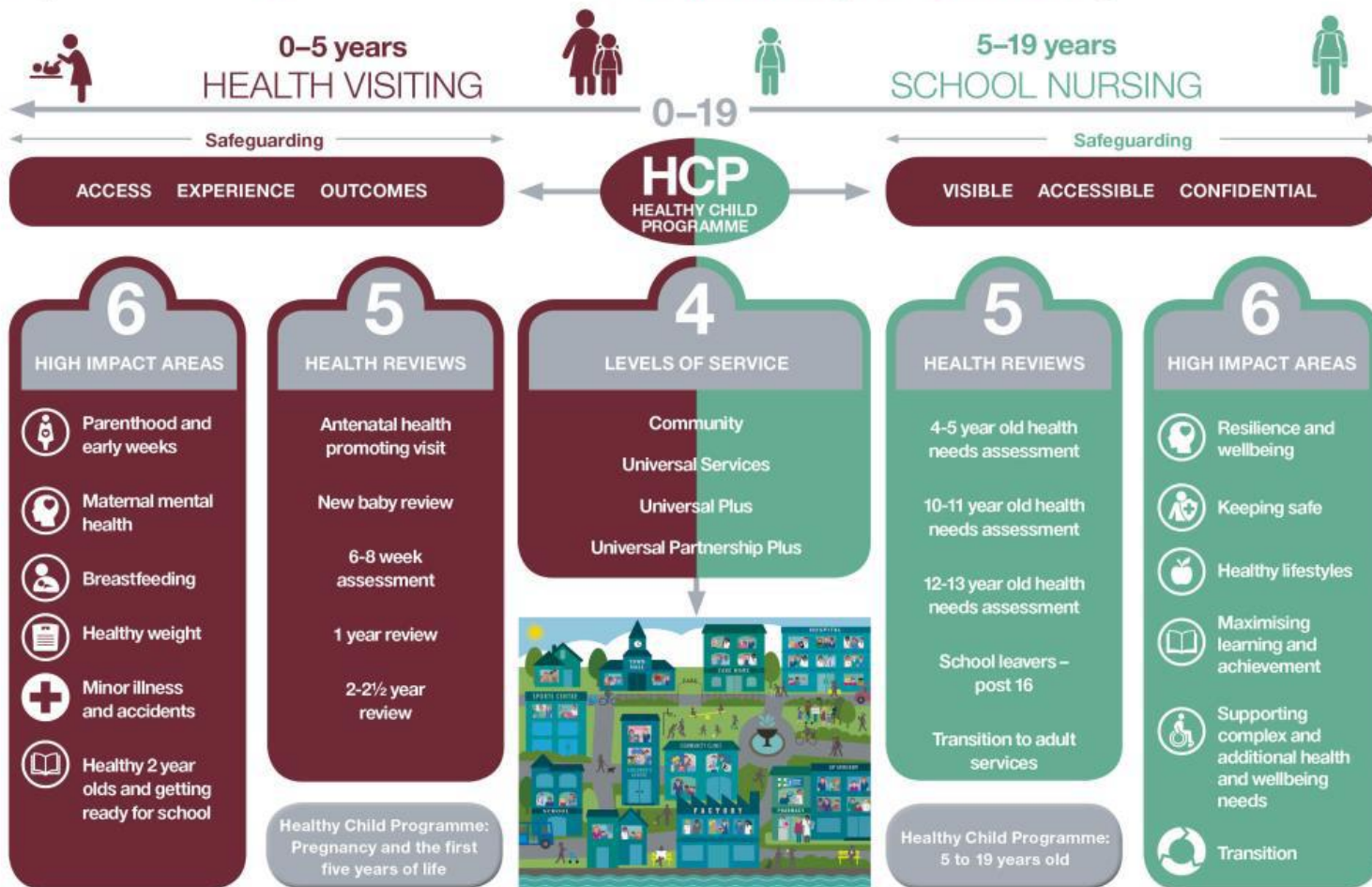
What will the service deliver

- “Healthy Child Programme” for Worcestershire
 - Mandated statutory framework for delivery of CYP PH services
 - Child health promotion, surveillance, screening, immunisations, child development reviews, prevention and early intervention
- Evidence based and targeted provision
 - Intensive support for vulnerable young mothers
 - Parenting support and parenting programmes
 - Breastfeeding support service
- Community Capacity Building
 - Volunteer and peer support– Community parenting, breastfeeding buddies
 - Strengthening communities- language, parenting, school readiness
 - Increasing access to community resources and activities – children's centres, community hubs, social prescribing

0-19s–Prevention and Early Intervention



Healthy Child Programme: The 4-5-6 approach for health visiting and school nursing



© Crown copyright 2018, PN1100232 Published February 2018. Gateway reference 2018088