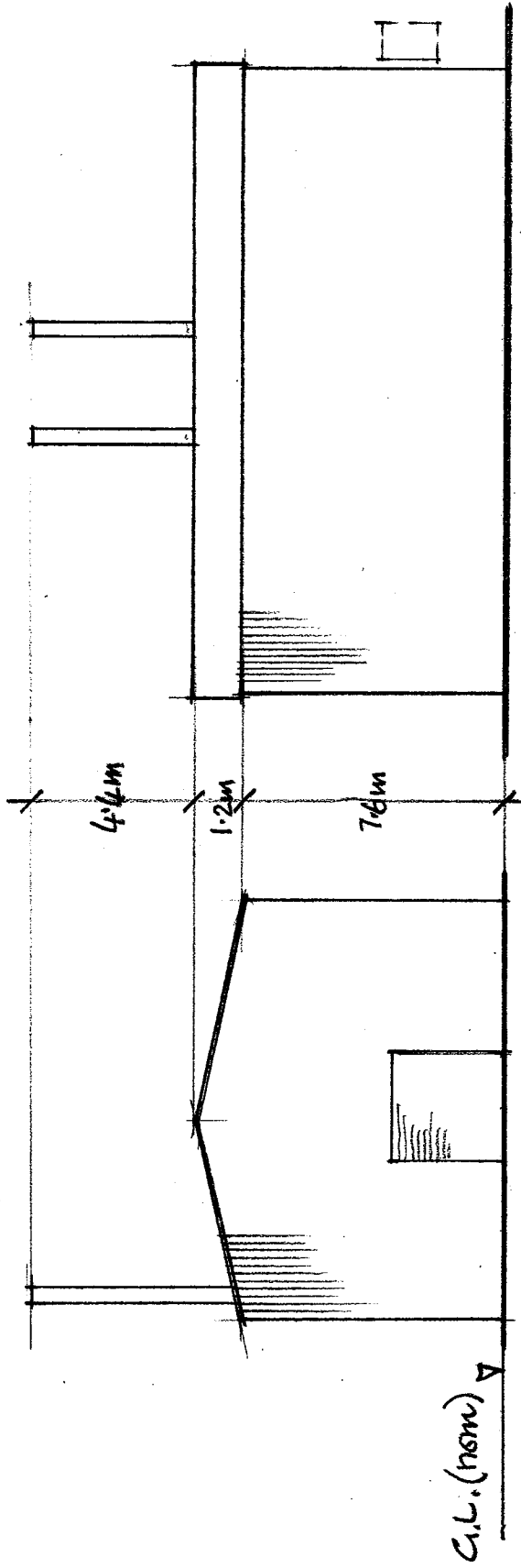


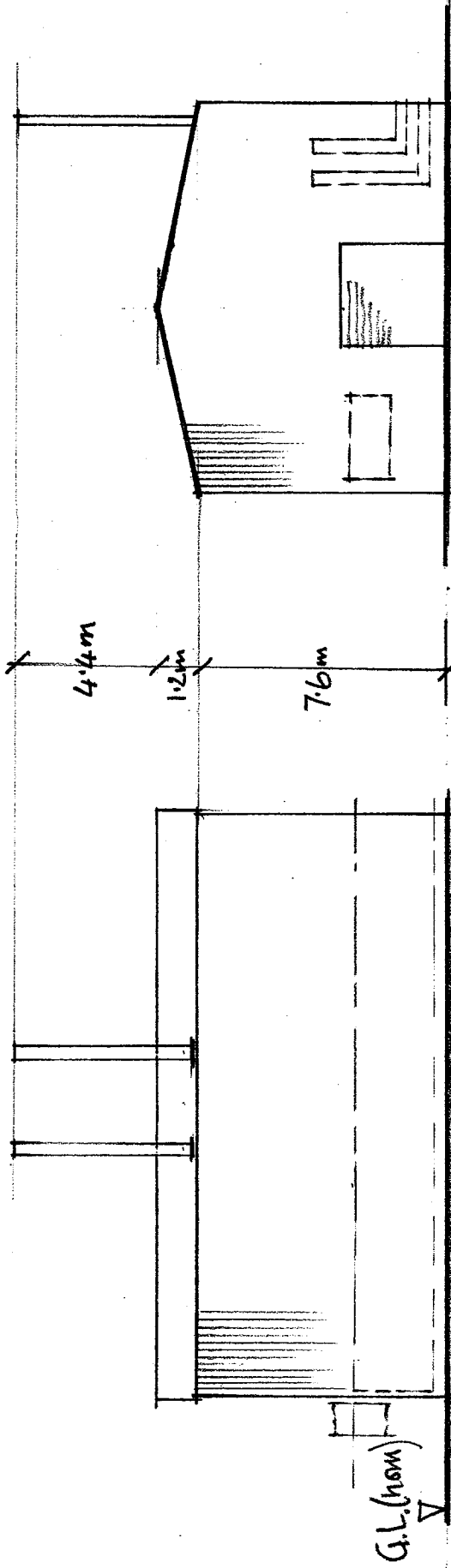
PLAN OF BIOMASS PLANT

scale 1:200 @ A3



SOUTH-WEST ELEVATION

SOUTH-EAST ELEVATION



NORTH-WEST ELEVATION

NORTH-EAST ELEVATION

Materials

- Walls. Cort steel ribbed cladding, colour Dove Grey BS 22 B 17
- Roof. Cort steel corrugated roof sheeting colour Dove Grey BS 22 B 17
- Doors. Galvanised steel.
- Flues. Stainless steel.

Scale 1:200 @ A3



NOTES

- Dimensions taken from site survey photographs
- G.L. - nominal - Working platforms around building set at required heights may differ.

Consolidation application for the construction and operation of a biomass boiler, erection of replacement building to house the biomass boiler, installation of replacement washing plant, Construction of Ancillary 'Fire Pond' and amendments to the layout and operation of the existing waste transfer station (approved under planning permission 09/00057/CM) including increased waste throughput, together with extended Saturday working hours, (Part-Retrospective).