

**Appendices to the minutes of the West Mercia Police
and Crime Panel held on 23 July 2014**

This page is intentionally left blank

Policing Domestic Abuse.



Damian Pettit

DCI Protecting Vulnerable People Department.

'Any incident or pattern of incidents of controlling, coercive or threatening behaviour, violence or abuse between those aged 16 or over who are or have been intimate partners or family members regardless of gender or sexuality. This can encompass but is not limited to the following types of abuse: psychological, physical, sexual, financial and emotional'

Domestic Abuse Strategic Context

- Priority for Government / Police Service
- Broader holistic Partnership challenge
- Alliance Vision is built around 'Protection from Harm'
- Increased focus on most vulnerable-Investment.
- Implementation of PVP Model is to be complete by July 2014.

Domestic Abuse Prevalence

- Only about 10% of all incidents of domestic violence are reported to the police.
- One domestic violence call to police every minute in the UK.
- 85-95% of victims are women.
- Over 50% of all Domestic Abuse relationships have children exposed within.
- 1 in 4 people will be victim of Domestic abuse at some point in their life.
- The estimated national total cost of domestic violence to society in monetary terms is £23 billion per annum.

West Mercia Police Performance

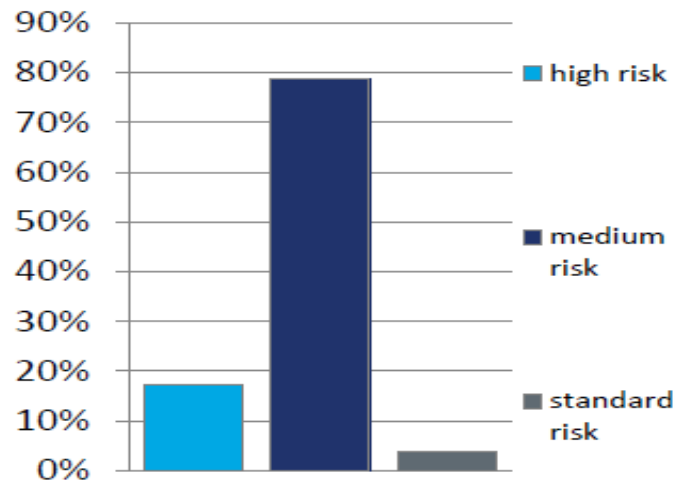


- Calls for assistance

In West Mercia, domestic abuse accounts for 5% of calls to the police for assistance. Of these calls, 20% were from repeat victims.

Risk levels

Risk levels



Risk levels:

On 23 October 2013 West Mercia had 402 active domestic abuse cases; 17% were high risk, 79% were medium risk, and 4% were standard risk.



Arrest rate



Arrests

For every 100 domestic abuse crimes recorded, there were 60 arrests in West Mercia. For most forces the number is between 45 and 75%

Outcome

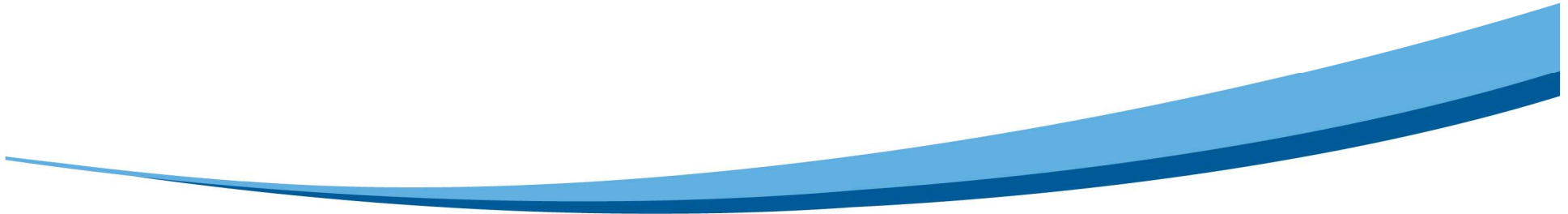


West Mercia recorded 4,859 domestic abuse related crimes for the 12 months to the end of August 2013. Of these crimes, 41% resulted in a charge, 13% resulted in a caution and, 6% had an out of court disposal, for example, a fixed penalty notice for disorderly conduct.



Case Study

- Jane was subjected to horrendous injuries and abuse by her longstanding partner.
- There were two young children in the family.
- Jane was 'in the cycle' and was reluctant to leave the relationship.
- A range of multi-agency tactics employed to safeguard, support and remove her and her children from this situation.
- Breaches of RO, using level of assault as 'bad character';
- Monitoring whilst in prison;
- Cross-border, multi-agency management
- Strong emphasis on the multi-agency management of the perpetrator
- New life formed with a degree of anonymity and safety.



Domestic Abuse delivery plan

- Not complacent, continually seeking to improve
- Build on the good work already undertaken
- Domestic Violence Disclosure Scheme
- Domestic Violence Protection Order
- High-profile multi agency campaigns
- Offender Management Focus
- Ongoing development with Harm Assessment Units and Risk Assessor roles
- Learning & Development for staff education
- Capture HMIC recommendations, supporting the West Mercia delivery plan

DVDS / DVPOs

- Approx 40 'Right to Ask' across Alliance
- 3 disclosures under 'Right to Ask'
- 'Right to Know' being routinely considered
- 2nd June Warwickshire, Telford and Shropshire roll-out of DVPOs
- Continually considered and authorised in South Worcester, North Worcester and Hereford

HMIC Inspection 'Everyone's Business'

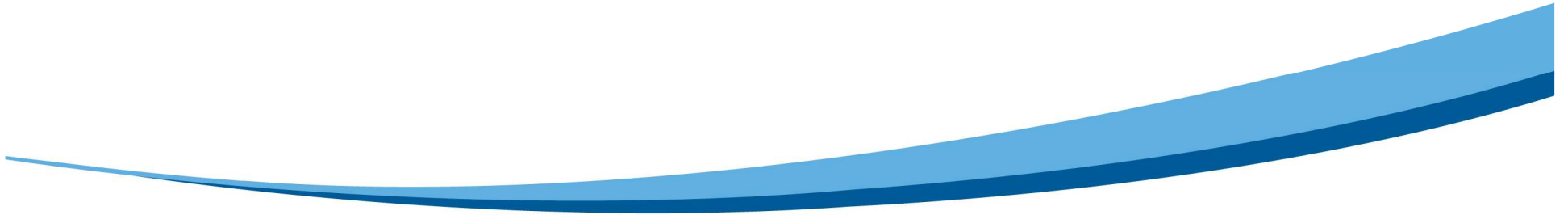
- Part of range of Public Protection Inspections (CSE / Child Abuse / Missing)
- Alliance perspective but separate Force Reviews – wide ranging
- Adverse comment around the national Policing response from Government and Media post publication
- National Strategic Domestic Abuse Task Group implemented

West Mercia key areas

- Quality assurance
- Training
- ACPO definition: education and training
- Use of body worn video
- Crime allocation with specialist support
- Risk assessment monitoring and evaluation
- Supervision of Risk Management Plans and signposting
- IDVA service provision and integration
- DA problem profile to inform police response
- Best use of new powers

Domestic Abuse Opportunities

- To build upon strong partnership base
- To maximise further opportunities (e.g. perpetrator focus).
- Further investment – IDVAs / MARAC / IT
- Learning & Development – Addressing the Culture and knowledge base.
- Continue to demonstrate effective working



Challenges

- Declining resource base through austerity
- Reduction in provision of specialist voluntary and statutory sector partners
- Increase in reporting levels due to an increase in confidence in the police and other specialist voluntary sector partners
- Increase in work load due to new and innovative legislative measures of protection for victims
- Heightened media and awareness through police and partner agencies
- Consistency and sustainability.

Domestic Abuse and Victims commissioning update

Police and Crime Panel, 23 July 2014

Andy Champness (Chief Executive)

Glyn Edwards (Commissioning Manager)

West Mercia OPCC Commissioning framework

- Assessment of local population needs,
- Prioritisation of outcomes,
- Understanding the existing and potential market place
- Procurement of products and services to achieve those outcomes, and
- Supporting service providers to enable them to deliver outcomes for individual service users.
- Cyclical.



Domestic Abuse in West Mercia

Domestic Abuse accounts for 5% of calls to the police for assistance. Of these calls, 20% were from repeat victims.

Domestic Abuse
accounts for 8% of all
recorded crime



Inspecting policing
in the public interest

56% of all harassment
offences were DV
related

18% of all assaults with intent were DV related

31% assault with injury were DV related

56% of all harassment offences were DV related

12% of sexual offences were DV related

Source: HMIC 2014

It is recognised that throughout West Mercia we have:



Reach throughout the region

Good service delivery

Accountable by outcomes

Innovation:

- IDVA piloting from hospital site
- non recourse to public funds pilot
- perpetrator and Freedom programmes

Initial commitment from LA commissioners to work 'collaboratively'

It is also recognised that we achieve this with...

- Different funding arrangements
- Different contractual timeframes
- Different specifications for core provision (for instance, IDVA)



Yet we are commissioning predominately the same outcomes

- Effective support to a victim of Domestic Abuse (*emotional, financial, physical or sexual*) regardless of where they live.
- Strategic – not just avoiding duplication, ensuring there is sufficient provision which complements the pathway for a victim.

PCC Commissioning of Domestic Abuse provision 2015 ...

Strategic commissioning of 'victim' pathway for West Mercia *Volume Crime, Domestic Abuse and Sexual Violence*

End to end pathway
of support for victim

Co-commissioning with
Local Authority
commissioners and
formalising Domestic
Abuse responsibilities



Strategic engagement
with LA and Public
Health, and CCG, to
ensure shared
outcomes are
understood/realised

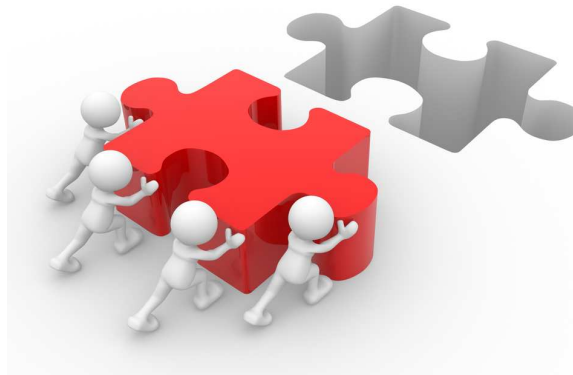
Joint commissioning where possible - *View of enhancing outcomes, increasing scope for value for money, cope and recovery focused.*

Key outcomes for PCC 2015-16

Continued PCC commitment and investment in IDVA's across West Mercia

Standardised IDVA
service specification
across West Mercia

Realised value for
money plan in place
with outcome targets
agreed



Co-commissioning fully
underway throughout the
pathway

Joint commissioning being
planned and joining up of
commissioning cycles

Common Assessment / Risk Framework used throughout the victim
pathway, and agreed protocol for onward referral

In summary...

Continue to enhance the delivery of Domestic Abuse services, in line with wider victims services by commissioning an end to end pathway

Single assessment and risk framework methodology throughout the pathway so to ensure the appropriate level of support



Where beneficial standardised specifications for core services, yet still sustain added value from being accountable to local need and difference

Continue to enhance shared outcomes with Local Authorities and Public Health, in addition to CCG

Co commission – joint commission – value for money - a partnership agenda